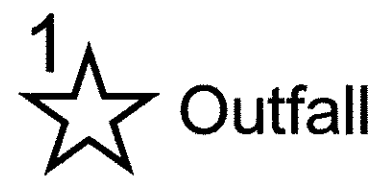


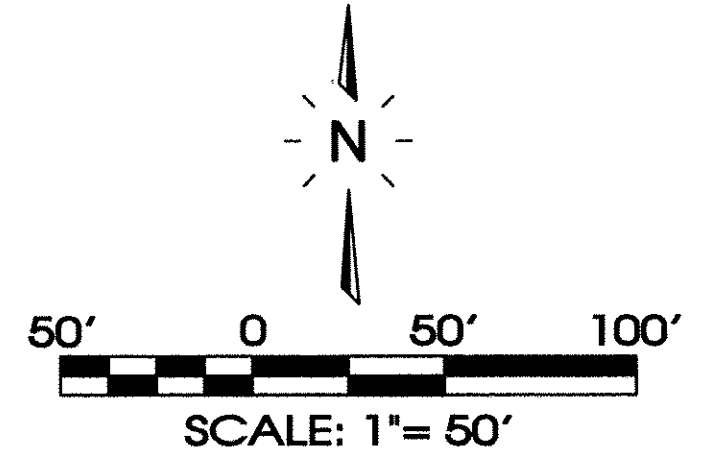
Legend:									
□	EXIST. CONCRETE MONUMENT	⊕	BENCHMARK	⊕	POST INDICATOR VALVE	Ⓐ	DRAINAGE PIPE DESIGNATION	PH	PROPOSED STORM
●	IRON PIN SET (I.P.S.)	♿	HANDICAP PARKING SYMBOL	⊠	BLOW OFF VALVE	Ⓜ	RIP RAP	OH	EXISTING CONTOUR LINES
○	IRON PIN FOUND (I.P.F.)	V.A.	VAN ACCESSIBLE HANDICAP DESIGNATION	⊠	REDUCER	➔	RUNOFF FLOW ARROW	—601—	PROPOSED CONTOUR LINES
+	EXIST. SIGN POST	⊕	HC SIGN	⊠	REMOTE FIRE DEPT. CONNECTION	⊠	INLET FILTER PROTECTION	—SS—SS—	EXISTING SANITARY SEWER
○	EXIST. SEWER CLEANOUT	+	PROPOSED SIGN POST	⊠	CONCRETE THRUST BLOCK	63.25 x	PROPOSED SPOT ELEVATION	—SS—SS—	PROPOSED SANITARY SEWER
○	EXIST. MANHOLE (SEWER & PHONE)	●	CONCRETE BOLLARD	⊠	DOUBLE DETECTOR CHECK VALVE	(63.25) x	EXIST. SPOT ELEVATION	—W—W—W—	EXISTING WATER
⊠	EXIST. CATCH BASIN (STORM SEWER)	⊠	WHEEL STOP	⊠	FIRE DEPT. CONNECTION	>	SEWER/STORM FLOW DIRECTION	—E—E—E—	EROSION EEL
⊠	EXIST. WATER/GAS VALVE	⊠	CONCRETE SIDEWALK	⊠	FIRE HYDRANT	⊠	CATCH BASIN	—X—X—X—X—	EXISTING FENCELINE
⊠	EXIST. TELEPHONE RISER	⊠	EXTRUDED CURB	⊠	GATE VALVE & BOX	⊠	CURB INLET	⊠	MINIMUM BUILDING SETBACK LINE
⊠	EXIST. GAS RISER	⊠	CURB & GUTTER	⊠	WATER METER	⊠	AREA DRAIN	⊠	PHASE BOUNDARY
⊠	ELECTRICAL ENCLOSURE	➔	TRAFFIC ARROW	⊠	GAS METER	⊠	HEADWALL	⊠	EXISTING GAS LINE
⊠	EXIST. WATER METER	➔	TURN LANE ARROWS	⊠	GREASE TRAP	⊠	WINGED HEADWALL	⊠	GAS
⊠	EXIST. UTILITY POLE	⊠	REVISION NUMBER	⊠	EXTERIOR CLEANOUT EOO	⊠	CONCRETE SWALE	⊠	PROPOSED GAS LINE
⊠	EXIST. FIRE HYDRANT	#1	DRAINAGE STRUCTURE DESIGNATION	○	MANHOLE	⊠	TYPE- X- HEADWALL	⊠	EXISTING STORM



FINAL OUTFALLS				
NUMBER	DESCRIPTION	DISTURBED AREA	TOTAL AREA	% SLOPES
1	SILT FENCE ON NORTHWEST PROPERTY LINE	3.37	3.37	5%-12%
2	DETENTION POND OUTLET	20.19	24.63	5%-17%
3	NORTHEAST PROPERTY LINE	2.91	48.98	5%-17%

- Notes:
- 1) All cut and fill work shown on lots must be completed prior to issuance of any building permits.
 - 2) The Lots must be stabilized or EPSC protected along with public infrastructure prior to final plat being signed.
 - 3) Any slopes greater than 3:1 will require Erosion Control Matting Or Equivalent.
 - 4) As-Built surveys and certifications will be required for detention ponds, public storm infrastructure, and cut/fill on lots, prior to the release of lots for home construction.
 - 5) Detention Pond and All Common Space Areas To Be Maintained By HOA.

* Critical Lots: An Engineered Site Plan Shall Be Submitted and Approved By The City of Fairview Engineering Department.



SEE SHEET C5.0 FOR PIPE & STRUCTURE TABLES

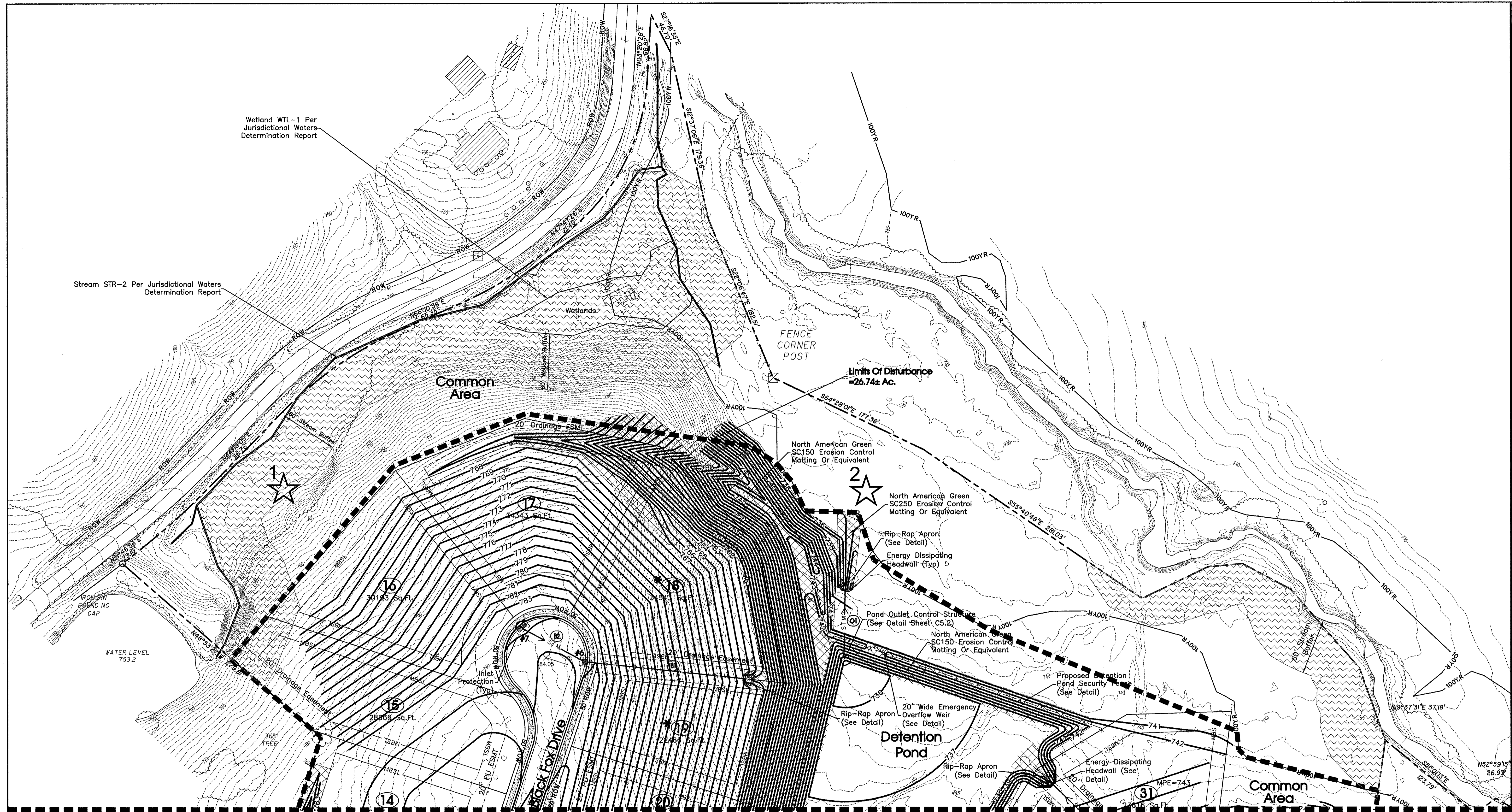
SITE ENGINEERING CONSULTANTS
 ENGINEERING • SURVEYING • LAND PLANNING
SEC, Inc.
 LANDSCAPE ARCHITECTURE
 850 MIDDLE TENNESSEE BOULEVARD
 MURFREESBORO, TENNESSEE 37129
 PHONE: (615) 890-7901 EMAIL: MTAYLOR@SEC-CIVIL.COM FAX: (615) 895-2567
 NO PORTION OF THIS DRAWING MAY BE REPRODUCED WITHOUT WRITTEN CONSENT OF SEC, INC.
 COPYRIGHT © SEC, INC. 2020

Aden Woods
 Section 2
 Fairview, Tennessee

Grading And Drainage &
 Final EPSC/SWPP Plan

REVISIONS:
 1-6-2021: Staff Comments #1
 2-25-2021: Staff Comments #2
 4-27-2021: Eng. Review

DRAWN: CFB3, SJA
 DATE: 12-4-2020
 CHECKED:
 MAT
 FILE NAME:
 20058AdenWoods2
 SCALE:
 1"=50'
 JOB NO.
 20058
 SHEET:



Matchline Sheet C3.0

Legend:									
□	EXIST. CONCRETE MONUMENT	⊕	BENCHMARK	⊙	POST INDICATOR VALVE	Ⓐ	DRAINAGE PIPE DESIGNATION	PH	PROPOSED STORM
●	IRON PIN SET (I.P.S.)	♿	HANDICAP PARKING SYMBOL	⊠	BLOW OFF VALVE	⊗	RIP RAP	OH	EXISTING CONTOUR LINES
○	IRON PIN FOUND (I.P.F.)	V.A.	VAN ACCESSIBLE HANDICAP DESIGNATION	⊞	REDUCER	➔	RUNOFF FLOW ARROW	60+	PROPOSED CONTOUR LINES
+	EXIST. SIGN POST	HC	HC SIGN	⊞	REMOTE FIRE DEPT. CONNECTION	⊞	INLET FILTER PROTECTION	60-	EXISTING SANITARY SEWER
○	EXIST. SEWER CLEANOUT	+	PROPOSED SIGN POST	⊞	CONCRETE THRUST BLOCK	63.25	PROPOSED SPOT ELEVATION	SS	PROPOSED SANITARY SEWER
○	EXIST. MANHOLE (SEWER & PHONE)	•	CONCRETE BOLLARD	⊞	DOUBLE DETECTOR CHECK VALVE	(63.25)	EXIST. SPOT ELEVATION	SS	EXISTING WATER
⊞	EXIST. CATCH BASIN (STORM SEWER)	⊞	WHEEL STOP	⊞	FIRE DEPT. CONNECTION	>	SEWER/STORM FLOW DIRECTION	W	PROPOSED WATER
⊞	EXIST. WATER/GAS VALVE	⊞	CONCRETE SIDEWALK	⊞	FIRE HYDRANT	⊞	CATCH BASIN	W	
⊞	EXIST. TELEPHONE RISER	⊞	EXTRUDED CURB	⊞	GATE VALVE & BOX	⊞	CURB INLET		
⊞	EXIST. GAS RISER	⊞	CURB & GUTTER	⊞	WATER METER	⊞	AREA DRAIN		
⊞	ELECTRICAL ENCLOSURE	➔	TRAFFIC ARROW	⊞	GAS METER	⊞	HEADWALL		
⊞	EXIST. WATER METER	➔	TURN LANE ARROWS	⊞	GREASE TRAP	⊞	WINGED HEADWALL		
⊞	EXIST. UTILITY POLE	⊞	REVISION NUMBER	⊞	EXTERIOR CLEANOUT ECD	⊞	CONCRETE SWALE		
⊞	EXIST. FIRE HYDRANT	#1	DRAINAGE STRUCTURE DESIGNATION	⊞	MANHOLE	⊞	TYPE- X- HEADWALL		

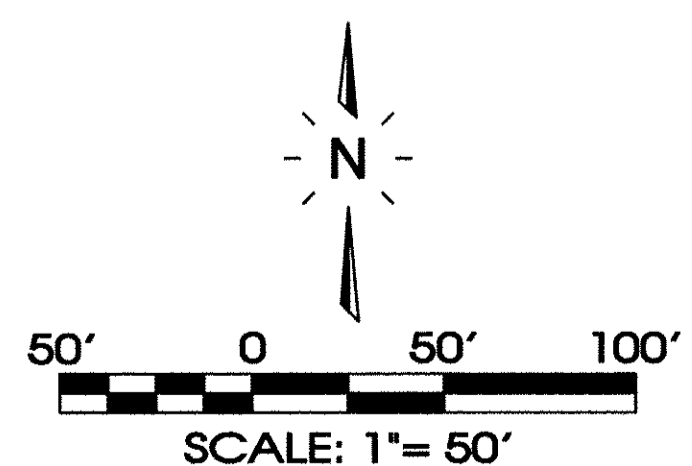
1 ★ Outfall

FINAL OUTFALLS				
NUMBER	DESCRIPTION	DISTURBED AREA	TOTAL AREA	% SLOPES
1	SILT FENCE ON NORTHWEST PROPERTY LINE	3.37	3.37	5%-12%
2	DETENTION POND OUTLET	20.19	24.63	5%-17%
3	NORTHEAST PROPERTY LINE	2.91	48.98	5%-17%

Notes:

- 1) All cut and fill work shown on lots must be completed prior to issuance of any building permits.
- 2) The Lots must be stabilized or EPSC protected along with public infrastructure prior to final plat being signed.
- 3) Any slopes greater than 3:1 will require Erosion Control Matting Or Equivalent.
- 4) As-Built surveys and certifications will be required for detention ponds, public storm infrastructure, and cut/fill on lots, prior to the release of lots for home construction.
- 5) Detention Pond and All Common Space Areas To Be Maintained By HOA.

★ Critical Lots:
An Engineered Site Plan Shall Be Submitted and Approved By The City of Fairview Engineering Department.



SEE SHEET C5.0 FOR PIPE & STRUCTURE TABLES

SEC, Inc.
 SITE ENGINEERING CONSULTANTS
 ENGINEERING • SURVEYING • LAND PLANNING
 LANDSCAPE ARCHITECTURE
 850 MIDDLE TENNESSEE BOULEVARD
 MURFREESBORO, TENNESSEE 37129
 PHONE: (615) 896-7901 • FAX: (615) 895-2567
 E-MAIL: M.TAYLOR@SEC-CIVIL.COM
 NO PORTION OF THIS DRAWING MAY BE REPRODUCED OR TRANSMITTED IN ANY FORM OR BY ANY MEANS, ELECTRONIC OR MECHANICAL, WITHOUT PERMISSION IN WRITING FROM SEC, INC.



Aden Woods
 Section 2
 Fairview, Tennessee

REVISIONS:
 1-6-2021: Staff Comments #1
 2-25-2021: Staff Comments #2
 4-27-2021: Eng. Review

DRAWN: CFB3, SJA
 DATE: 12-4-2020
 CHECKED:
 MAT
 FILE NAME:
 20058AdenWoods2
 SCALE:
 1"=50'
 JOB NO.
 20058
 SHEET:
C3.1